

HEADlines...

Parent Social

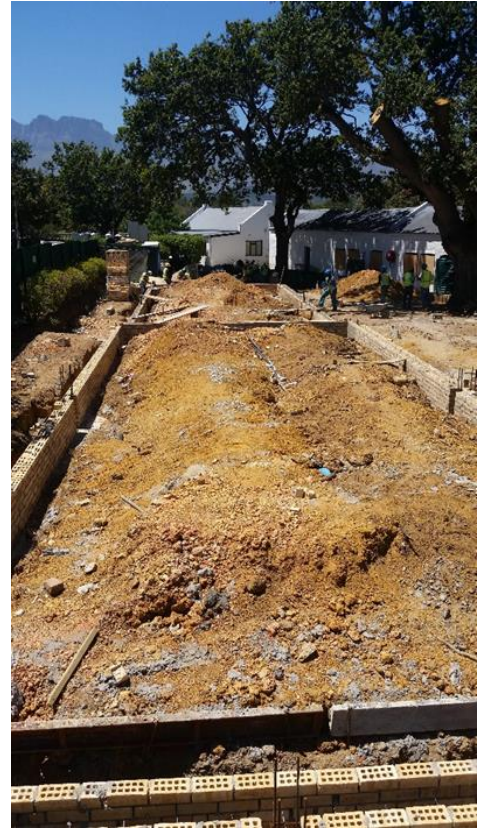
We look forward to seeing as many parents this evening as possible as we offer the opportunity to share a glass of wine and a snack under the oaks. The objective is to create the space for parents to meet each other. The weather is looking good and it should be a great event.

We are grateful to our Guild for the effort they have made in organising this event.

Building update

It is great to see that progress is being made on our new Grade 1 and 2 classrooms. The foundations are complete, and it will not be long before we see the walls taking shape. It has obviously been very noisy during this phase of the process and I appreciate the effort being made by our Junior Primary children and teachers to continue normally with their programmes.

The pictures should give you an idea of just how far the buildings have progressed.



Valentine's Day Civvies



Dress is red, pink and/or white



In aid of the Bizweni
Community Outreach
project



URGENT PLEA - PARKING

We ask for your co-operation with regards to our parking areas, especially during busy drop-off and collection times. Please be considerate with regards to where you stop your car to wait for your child.

- It is preferable for you to use a designated parking spot, as opposed to using part of the roadway which impedes the flow of traffic.
- We also ask that if you are parking your car at school for an extended period while you leave the school property, (for example to go jogging) that you rather use the furthest parking bays at the Prep School Aftercare building.
- Please do not stop behind parked vehicles so that the owners of these vehicles cannot leave when they need to.

We are exceptionally fortunate, compared to other schools, in that we have a significant amount of on-campus parking, as well as the design for a free flow of traffic. It is important though, that all parents co-operate in terms of safety (awareness of children in the parking areas) and consideration towards other parents.

UNIFORM – CHILDREN LEAVING CAMPUS

Please remember that children are not allowed to leave the school premises in swimming costumes. If they are in school uniform – they must please have their school shoes on. When children leave the school property, in any branded uniform or sports kit, they are a reflection of our school. We ask that they look neat as a sign of respect for their school.

You are cordially invited to the

Somerset House Music Department

Valentines Day Concert

Date: 14 February 2019

Time: 7:40 a.m.

Venue: Haydock Hall



**Performances by our
choirs, singers and
pianists.**

MESSAGE FROM MRS FREHSE

The Senior and Junior Choirs will be performing at the Valentine's Day Concert on Thursday, 14 Feb. The concert will be in the Haydock Hall and start at 07h40 until about 08h10. The Senior choir will have their normal practice on Thursday morning at 07h15. The Junior choir (Grade 2's and 3's) must please arrive at the Haydock hall no later than 07h30. Parents are welcome to watch.

TERM DATES AND HOLIDAYS WITHIN TERM-TIME

2020 Term Dates

Term 1: Wednesday 15 January to Friday 20 March

Term 2: Monday 6 April to Friday 12 June

Term 3: Tuesday 7 July to Wednesday 16 September

Term 4: Tuesday 29 September to Wednesday 2 December

2020 Holidays within Term-time:

Friday 10 April: Good Friday

Monday 13 April: Family Day

Monday 27 April: Freedom Day

Friday 1 May: Workers' Day

Monday 10 August: Women's' Day

FIND US ON SOCIAL MEDIA



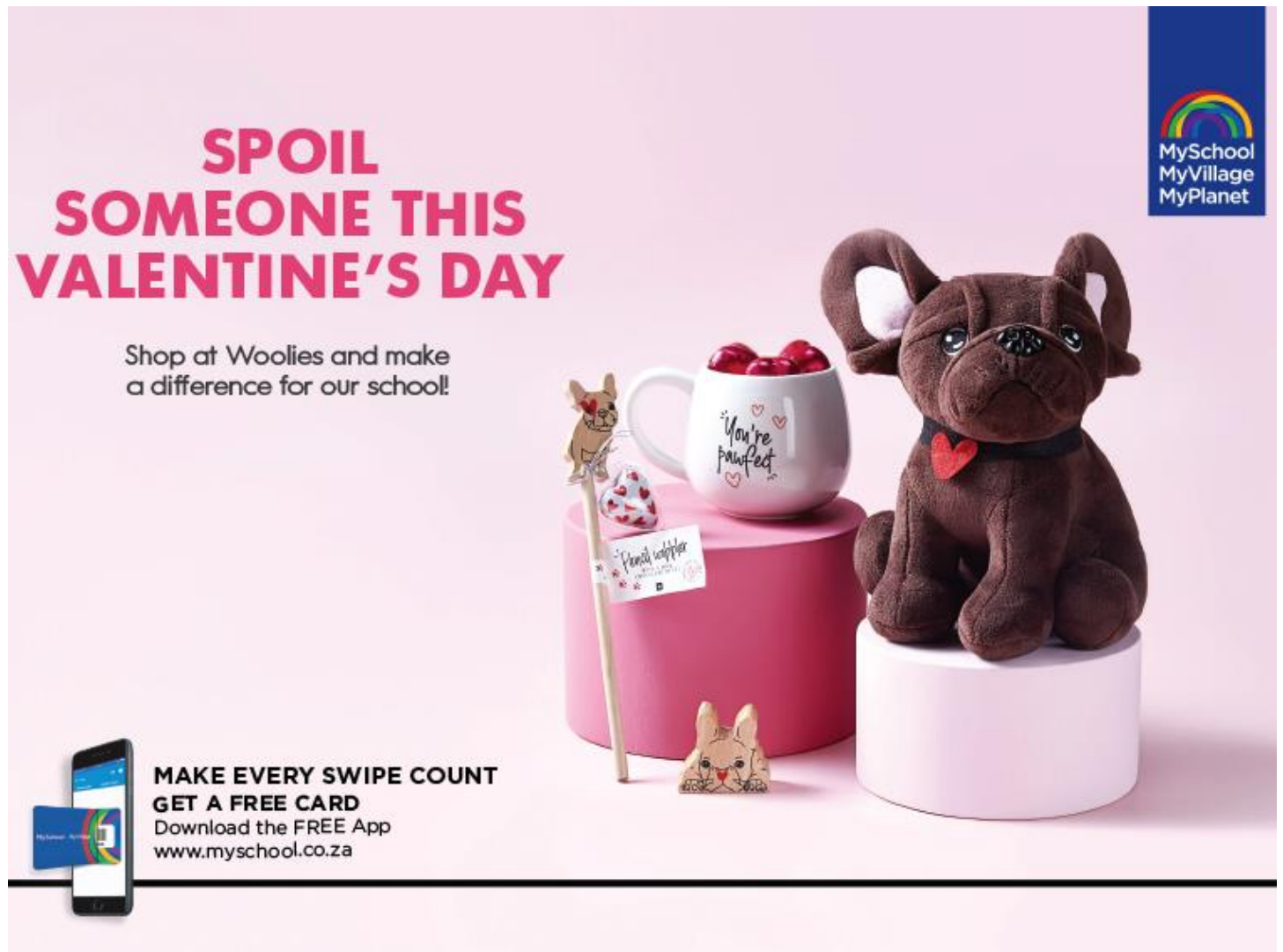
Please Like our page, recommend us on Facebook and feel free to share the school's posts.



Follow us @somersethouseschool and tag your photos #morethanaschool

JUNIOR PREP APPEAL

The JP are collecting sweets for Tereo in celebration of Valentine's Day. Please spread the love and send sweets to school during the week of the 14th February. They will then be delivered to the Tereo children with Valentine's Day cards made by the Junior Prep children.



**SPOIL
SOMEONE THIS
VALENTINE'S DAY**

Shop at Woolies and make
a difference for our school!

**MAKE EVERY SWIPE COUNT
GET A FREE CARD**
Download the FREE App
www.myschool.co.za

MySchool
MyVillage
MyPlanet

TRANSPORT DATABASE

Thank you to those who replied regarding assistance with transport to matches. For those who perhaps didn't see the request in last week's Newsletter, please see below for details. Thank You!

We had a discussion at the Guild Meeting on Wednesday night regarding transport to matches. We would like to draw up a data base with names of parents who would possibly be able to assist families with transport from time to time. Obviously, this would only apply if their child was playing and more than likely, in the same age group. When our teams play out of the Helderberg basin, we may hire a bus to transport them to their fixtures, however this is a very costly affair and cannot be arranged for all weekly league matches. We are well aware that some parents work full time and transporting their children to fixtures is not possible and we would therefore like to draw up a data base to possibly offer assistance to these families. Should you be in a position to possibly assist a child with transport, please could you drop Miss Mac an email on sport@somersehouse.co.za. Please state whether there are particular days that you are able to assist and the number of seats available in your car, not counting your own child's spot.

For the safety of all children, all seats must have seatbelts please. Once the data base is drawn up, we will send it out to parents. Should someone then be in need of a lift, they will know who to contact. We really appreciate any support that may be available. Thanks very much!

Miss Mac

FUN DAY!

SOMERSET HOUSE GUILD PRESENTS

FUN DAY



CARNIVAL RIDES, GAMES, FOOD, TOMBOLA, JUMPING CASTLES, COFFEE, LAZER TAG, PETTING ZOO, SILENT DISCO, OBSTACLE COURSE, FACE PAINTING, CANDYLAND, ZORB BALLS, ICE-CREAM AND MORE

FEBRUARY 23 | 12:00 PM - 17:00PM

★ GOLDEN TICKET ★

FUN DAY

SEARCH FOR THE GOLDEN TICKETS ON THE SCHOOL CAMPUS FROM 1 FEBRUARY UNTIL 22 FEBRUARY

FEB
23
2019

FUN DAY
SOMERSET HOUSE
SOMERSET WEST

12:00
P M